



PALMA ALTA ROUTE

OIT SES ESTACIONS	
	<p>PRACTICAL TIPS</p> <p>Plaça d'Espanya Ed. Parc de les Estacions Palma 07002 (Illes Balears)</p> <p>Phone: 902 102 365 Email: palmainfo@palma.es</p> <p>Opening hours: From 09:00 to 20:00 (Monday to Sunday)</p>
PHYSICAL ACCESSIBILITY	
ACCESS FROM THE STREET	
<p>Plaça Espanya: Pedestrian square crossed by vehicle traffic. Pedestrian crossings with lowered pavements. Guidance systems for the blind at pavements, bus stops and main routes around the square. Homogeneous cement pavement. Presence of non-levelled tree holes without grating.</p>	
ACCESS TO THE BUILDING	
<p>81 cm door with free passage. Small step of 3 cm height. The staff opens the door and offers help if necessary.</p>	
ACCESS FOR PEOPLE WITH VISUAL IMPAIRMENT	
<p>No information in Braille.</p>	
ACCESS FOR PEOPLE WITH HEARING IMPAIRMENT	
<p>The staff of the customer service department do not know any sign language. The acoustics of the premises can be improved. They do not have a magnetic loop.</p>	

Plaça Espanya



PHYSICAL ACCESSIBILITY

Pedestrian square crossed by a main road with four lanes in each direction.
Pedestrian crossings with lowered pavements.
Homogeneous cement pavement that does not hinder walking.
Presence of non-levelled tree holes without grid.

ACCESS FOR PEOPLE WITH VISUAL IMPAIRMENT

Guidance systems for the blind on pavements, at bus stops and main routes around the square.
the presence of street furniture such as streetlamps, benches and litter bins, as well as kiosks and cafeteria terraces, which may make it difficult for visually impaired people to move around, especially during rush hours

ACCESS FOR PEOPLE WITH HEARING IMPAIRMENT

Few signs indicating the direction of nearby tourist attractions and/or buildings of public interest.

Pl. Porta Pintada



PHYSICAL ACCESSIBILITY

- Pedestrian and vehicle road with restrictions.
- Variable road width.
- Smooth and homogeneous pavement, which does not obstruct pedestrian traffic.
- No holes to drain off rainwater or bollards.
- Presence of street lamps and waste containers.
- Presence of uneven trees without bars.

ACCESS FOR PEOPLE WITH VISUAL IMPAIRMENT

Street furniture that could impede the movement of visually impaired people. These are square concrete blocks of 120 cm side length and 45 cm height, which in some sections are arranged in a disorderly fashion. Homogeneous floor without unevenness, so that there is no guidance system for the blind. Presence of cafeteria terraces in some sections, which could make it difficult for the visually impaired to move around, especially during rush hours.

ACCESS FOR PEOPLE WITH HEARING IMPAIRMENT

Signs indicating the direction of nearby tourist attractions and/or buildings of public interest.

MERCAT DE L'OLIVAR



PRACTICAL TIPS

Plaça de l'Olivar , 4
07002 Palma de Mallorca

Phone: 971 720 314/15

E-mail:
comunicacion@mercatolivar.com

Web: www.mercatolivar.com

Opening hours:

Monday to Saturday from 7:00 to 14:30
(Friday until 20:00)

GENERAL INFORMATION

The Mercado del Olivar, built in 1951 and located in the centre of Palma de Mallorca, is one of the most important markets in the city, where you can find fresh and typical products of the island of Mallorca. Among them we highlight all kinds of fish and seafood, fruit and vegetables, butchers' shops, cheeses and cold cuts and even flowers. On the first floor there is a supermarket, some shops, bars and restaurants.

PHYSICAL ACCESSIBILITY

ACCESS FROM THE STREET

Plaça de l'Olivar: Pedestrian square, surrounded by vehicle traffic. Pedestrian walkways with lowered pavements without a guidance system for the blind. The trees within the square are separated by benches, and 50% of the trees near the street have a tree grid. Homogeneous concrete paving.

Corner of Calle de Sant Miquel: large grid with holes over 3 cm. Carrer dels Caputxins: pavement width reduced to 1.50 m due to unlevelled tree holes without grating. Cement tile pavement with relief.



ACCESS TO THE BUILDING

Two external ramps of 120 cm wide and 3 metres long. Slope of 6%. Railing with 6 cm lower base and double handrail with 95 cm and 69 cm height on one side and a single handrail on the other side.

- Access via the C/ Plaça de l'Olivar staircase with 8 steps without ramp.
- Access C/ Josep Tous i Ferrer staircase with steps, not accessible.
- Access Plaça Comtat de Rosselló, stairs and a ramp 3 m wide, 8 m long and 12% incline, with handrail and railing at 90 cm high.
- Access C/ Caputxins staircase nº2 not accessible..

INSIDE

Entrance through vehiclematic double sliding doors with high-contrast signage. Free passage of 1.90 metres. Inside, corridors with a width of more than 2 metres and turns of more than \varnothing 1.50 metres. Smooth tiled floor. Two lifts without SIA signs. Dimensions 1.20 m wide and 2.35 m long without railings, with a free passage of 1 m. It has doors at both ends, opposite doors and direct access from Plaça de l'Olivar to the first floor or underground car park.

TOILET ADAPTED FOR VISITORS WITH DISABILITIES

First floor toilet reserved for wheelchair users Access from the lift is through a 1 m wide vehicle door and a corridor over 2 m wide. Access from the lift is not signposted, although there are SIA signs on the door. The toilet is locked, which is available in every shop or at the supermarket checkout.

The door with a free passage of 97 cm opens inwards. You can turn in a circle of \varnothing 1.50 m. Lower access area 71 cm high and 19 cm deep. Height WC 49 cm with two railings, height washbasin 87 cm, has alarm button. The interior measures 182 x 482 cm.

ACCESS FOR PEOPLE WITH VISUAL IMPAIRMENT

Entrance through automatic sliding doors with high-contrast signage. Access for guide dogs is permitted. Guidance system for the blind in the lowered areas of Carrer Josep Tous i Ferrer, both at the corners and at the entrance to the building on this street. There is no guidance system at the exit of the car park at the back of the building (loading and unloading area in Plaça Comtat de Rosselló).

ACCESS FOR PEOPLE WITH HEARING IMPAIRMENT

Signs in two of the entrances, with the floors and the organisation of the building. Intuitive signage in the different areas of the market, as well as the emergency exits.

Carrer de Sant Miquel



PHYSICAL ACCESSIBILITY

Slightly sloping pedestrian street, more than 5 m wide and smooth pavement that does not hinder walking. There are grids in the middle axis of the street.

The part of the street that leads to Plaça de l'Olivar has 80 cm high bollards that delimit the access area for vehicles for loading and unloading goods, and a large grille with holes of over 3 cm.

ACCESS FOR PEOPLE WITH VISUAL IMPAIRMENT

Mostly homogeneous floor without unevenness, so that there is no guidance system for the blind. The presence of street vendors, street musicians, etc. along the entire route could make it difficult for visually impaired people to move on these roads.

ACCESS FOR PEOPLE WITH HEARING IMPAIRMENT

Signs indicating the direction of nearby tourist points and/or buildings of public interest.

ESGLÈSIA DE SANT MIQUEL (SANT MIQUEL CHURCH)



PRACTICAL TIPS

Calle de Sant Miquel nº21 07002 Palma de Mallorca

Phone: 971 715 455

Fairs on all days of the week.

The church can be visited freely outside of masses

GENERAL INFORMATION

The San Miguel (Sant Miquel) church, along with the churches of Santa Eulàlia, Sant Jaume and Santa Creu, is one of the four oldest parishes in Palma, dedicated to the patron saint of Miquel de Fabra, the confessor of King Jaume I, the Conqueror.

The parish is said to have been located on the site of the city's main mosque, Madina Mayurqa, during the Islamisation of the island.

Of the primitive Gothic church, only the façade remains, from which the high-quality image of San Miguel and the square bell tower stand out. The church was rebuilt in the 17th century in Baroque style.

Noteworthy is the large wickerwork arch that rises from helical shaft pilasters. The main altarpiece, designed by Francisco Herrera, is presided over by the figures of the three archangels St. Michael, St. Gabriel and St. Raphael with their usual symbols - armour and sword, flower and fish.

This parish also houses the sanctuary of the Virgen M^a de la Salud, the patron saint of Palma, who is greatly venerated by the Mallorcan people. In the third side chapel on the right is the image of the Virgin and Child, which according to legend was brought to his galley by King Jaume, the conqueror of Mallorca, in the 13th century, as you can see on the canvas on the right in the same chapel.



Ajuntament de Palma

PHYSICAL ACCESSIBILITY

ACCESS FROM THE STREET

Calle Sant Miquel: a pedestrian street with a slight incline, more than 5 metres wide and smoothly paved, which does not hinder walking. There are bars in the central axis of the street. The part of the street that leads to Plaça de l'Olivar has 80 cm high bollards that delimit the access area for vehicles for loading and unloading goods.

ACCESS TO THE BUILDING

Entrance to the church through two small ramps in the door to overcome the entrance step, 81 cm wide and 20% slope.

INSIDE

Barrier-free paths inside

TOILET ADAPTED FOR VISITORS WITH DISABILITIES

There is no toilet adapted for disabled visitors.

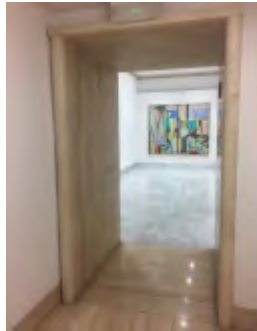
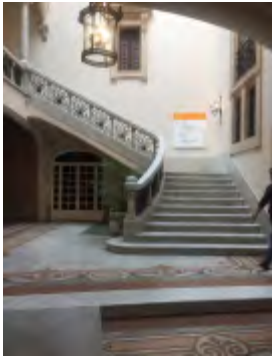
ACCESS FOR PEOPLE WITH VISUAL IMPAIRMENT

The access paving in Calle de Sant Miquel is homogeneous and has no guidance system for the blind. The distribution of street furniture is mainly lateral. The trees are easy to spot because they have large wooden pots and there are no tree holes along this street. In the church, the floor is even and the furniture is tidy, without elements that make it difficult to move. The lighting is weak.

ACCESS FOR PEOPLE WITH HEARING IMPAIRMENT

The services are not held in sign language and there is no information material accessible to deaf people, although the environment is limited and very intuitive.

MUSEU FUNDACIÓ JOAN MARCH PALMA (JOAN MARCH PALMA FOUNDATION MUSEUM)



PRACTICAL TIPS

Calle Sant Miquel, 11
07002 Palma de Mallorca

Phone: 971 713 515 971 710 428

E-mail: museupalma@march.es

Web: www.march.es/arte/palma

Opening hours

Monday to Friday: 10-18:30.

Saturdays: 10:30-14 hrs.

Sundays and public holidays: closed

Guided tours

(advance booking)

Monday to Friday: 10-14 hrs.

The museum has a bookstore - museum store

GENERAL INFORMATION

The Juan March Foundation Museum in Palma is located in the building of a former 17th-century mansion, which was renovated by the architect Guillem Reynés i Font. It houses works by the best Spanish artists of the twentieth century and modern art, as well as artists such as Pablo Picasso, Joan Miró, Juan Gris and Salvador Dali.

PHYSICAL ACCESSIBILITY

ACCESS FROM THE STREET

Calle Sant Miquel: a pedestrian street with a slight incline, more than 5 metres wide and smoothly paved so as not to hinder walking. There are bars in the central axis of the street. The part of the street that leads to Plaça de l'Olivar has 80 cm high bollards that define the access area for vehicles for loading and unloading goods.

ACCESS TO THE BUILDING

Entrance to the museum via a small ramp 97 cm wide and a door with a free passage of more than 2 m.



INSIDE
<p>The counter does not have a room adapted for wheelchair users. There is a 2.15 m long and 1.06 m wide internal ramp without handrail with an inclination of 8%.</p> <p>Access to the exhibitions on the first and second floors is by means of a lift, which is located at the end of the courtyard through a double swing door with a free passage of 120 cm. The lift is 1.08 m wide and 1.23 m long with a free doorway of 80 cm without handrail. It contains no SIA signs or information in tactile or Braille.</p>
EXHIBITIONS
<p>Persons requiring the lift must follow the emergency evacuation route. The permanent exhibition is located on the 1st floor. When leaving the lift, you must pass through two evacuation doors with a free passage of 90 cm without SIA signs. Temporary exhibitions are located on floor 2. Please note that the route may change depending on the type of exhibition. When exiting the lift, you must pass through two evacuation doors with a free passage of 80 cm without SIA signs. The floor in all rooms is homogeneous and the passages between rooms are more than 1m long.</p>
TOILET ADAPTED FOR VISITORS WITH DISABILITIES
<p>The museum has two adapted toilets, one on the ground floor without SIA signs, through a door with a free passage of 82 cm and a 1 m wide corridor. The door to the toilet is a sliding door with a free passage of 76 cm. The dimensions of the toilet are 2.00 m wide and 2.00 m long; wheelchair users have a Ø of 1.50 m available for turning.</p> <p>Lateral access space of 65 cm. Lower approach area 76 cm high and 40 cm deep. Toilet height 48 cm and wash basin 88 cm. Taps and lighting with motion detector.</p> <p>The toilet on the first floor has a door that opens inwards and provides a free passage of 80 cm. The dimensions of the toilet are 180 x 232 cm, but wheelchair users do not have a Ø of 1.50 m available for turning</p>
ACCESS FOR PEOPLE WITH VISUAL IMPAIRMENT
<p>Guide dogs are allowed. The interior floor covering is homogeneous. Due to the temporary nature of some shows, the route may vary and there may be overhanging and unmarked elements.</p>
ACCESS FOR PEOPLE WITH HEARING IMPAIRMENT
<p>The museum has neither an audio guide nor a magnetic loop. The public relations staff is not familiar with sign language. There are posters and information signs.</p>

Plaça Major – Plaça Cort



PHYSICAL ACCESSIBILITY

PLAÇA-MAJOR LIFT

Cabin: double panelling, width 1,20 cm, depth 2,36 cm
 Doors from 80 cm.
 Buttons between 108 cm and 122 cm.
 Banisters 90 cm high.
 No signalling of the floors when boarding.
 With SIA signs

PLAÇA MAJOR

Type of square: for pedestrians
 Wide pavement: Type of pavement: large tiles that do not hinder walking.
 Turning radius at the corners: >Ø 1.50 m Lowered pavements: no
 Slope of the road: 6%. Grid: Gaps between 2 and 4 cm
 Note: Grids around the square

FAÇANA CAN FORTEZA I REI + L'ÀGUILA

Type of square: for pedestrians
 Width: >4,00 m. Type of pavement: stone that does not hinder walking
 Radius in the corners: Ø 1.00 m Reduced fords: Yes
 No guidance system for the blind. Inclination: 6%.
 Length: 60 cm
 Slope of the road: no significant gradient. Grid: none. Bollard: no



C/JAUME II
<p>Street type: for pedestrians Road width: > 4.00 m Type of paving: paving that does not hinder walking Lowered pavements: Yes No guidance system for the blind. Inclination: 6% Length: 60 cm Slope of the road: Gentle slope towards the end of the road. Grid: in the middle part gaps between 2 and 3 cm Trees: no</p>
C/ COLOM
<p>Road type: for vehicles Pavement width: 2.65 m reduced to 1.90 m and 1.50 m in some places Type of paving: paving that does not hinder walking. Radius at the corners: Ø 1.70 m Lowered pavements: Yes No guidance system for the blind. Inclination: 6%. Length: 60 cm Slope of the road: no significant gradient. Grid: none. Bollard: 30 cm high trees: levelled with a grid of holes between 2 and 3 cm</p>
C/ ARGENTERIA
<p>Street type: for pedestrians Road width: 3.60 m. Pavement that does not generally hinder walking. In the section adjacent to the church of Santa Eulalia, cobblestones that could make walking difficult radius at the corners: Ø 1.70 m Slope of the road: no significant gradient. Grid: in the central part, gaps between 2 and 3 cm. Bollard: no Trees: no</p>
ACCESS FOR PEOPLE WITH VISUAL IMPAIRMENT
PLAÇA-MAJOR LIFT
<p>Braille system inside</p>
PLAÇA MAJOR
<p>The floor is usually homogeneous, but uneven areas are not marked with anti-slip strips and/or guidance systems for the blind; the signage is small.</p>
C/JAUME II , C/ COLOM - C/ ARGENTERIA
<p>The ground is mostly homogeneous, but not all unevenness is marked with anti-slip strips and/or guide systems for the blind; in Colom street the logs are properly levelled with iron perforated covers. The large influx of people during the high season could make it difficult for visually impaired people to move around these streets</p>

ACCESS FOR PEOPLE WITH HEARING IMPAIRMENT

PLAÇA-MAJOR LIFT

Lift with glass walls that allow visual contact to the outside

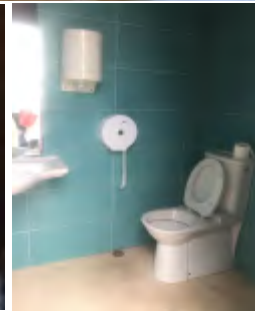
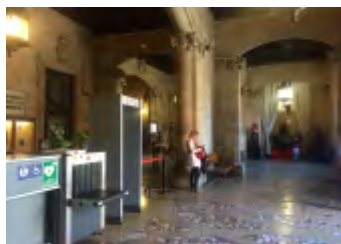
PLAÇA MAJOR

There are signs indicating the direction of the various points of tourist interest. The signposting is small.

C/JAUME II / C/ COLOM / C/ ARGENTERIA

It is easy to find signs indicating the direction of tourist attractions, the names of streets and/or buildings of public interest nearby.

AJUNTAMENT DE PALMA



PRACTICAL TIPS

Plaza de Cort 1, cp.07001
Phone: 971 225 900
Visitors' telephone: 618 914 517
E-mail: ajuntament@palma.es
E-mail visitas: visites@palma.cat
Web: www.palma.cat

Guided tours of the town hall by appointment and for limited groups.

Opening hours: Monday to Friday from 8.30 to 20.30 and Saturdays from 9.00 to 13.00 Closed on Sundays.

GENERAL INFORMATION

The Palma Town Hall, located in the heart of the old town, was built in the 17th century by the architects Pere Bauçá, Miquel Oliver and Bartomeu Calafat. The main façade of the building has Baroque and Mannerist style elements, as well as the balcony, the d'en Figuera clock and the 'Si no Fuese o Si no Fos' bench.

In the same Plaza del Cort, just in front of the Town Hall, we find the Olivera del Cort, an olive tree that is about 500-600 years old and a symbol of peace. It was transplanted from the Sierra de Tramuntana to the Plaza del Cort in 1999.

PHYSICAL ACCESSIBILITY

PLAÇA DE CORT



Type of pitch: for vehicles
 Width of the pavement: 3,90m
 Type of paving: cobbled pavements, which do not hinder walking, and paved areas, which can make walking difficult (in some areas there are 1 cm of unevenness)
 Radius in the corners: Ø 1.60 m. Reduced fords: Yes
 No guidance system for the blind. Inclination: 6%.
 Length: 60 cm
 Gradient of the road: no significant gradient.
 Grid: in the central part, gaps between 2 and 3 cm.
 Bollard: no. Trees: no.
 Presence of street furniture and manhole covers (1 cm projection)

AJUNTAMENT (TOWN HALL)

Access: Non-slip metal ramp, 108 cm long, 14 cm high and 214 cm wide
 Access door > 2,14 m
 Counter height of 1.29 m There is no space at the counter suitable for wheelchair users.

Toilet: reserved for wheelchair users with SIA sign.
 Access to the toilet: passage through the security checkpoint (width 150 cm)
 Drive through 2 doors with 13 meters between them. Corridor width of 274 cm, smooth flooring. Width of the first door 82 cm, second swing door 127 cm.
 Passage through an outer courtyard. Width of the passage of 150 cm, homogeneous cement covering. Free passage of the toilet door 80 cm (opens to the outside), through an access ramp 62 cm long, 8 cm high and 80 cm wide.
 Dimensions of the toilet 197 cm x 165 cm. Height of the toilet 44.5 cm. Bowl height 84 cm.
 Wheelchair users can turn within a radius of Ø 1.50 m
 No side strips
 Alarm button.
 Basin height 86 cm.
 Lower approach area height 75 cm and depth 55 cm.

Notes:
 - Access to the toilet is through an 87 cm wide door and a 2.04 m long corridor that leads to the patio with a 1.57 m wide pavement that provides access to the toilet.
 - The waste bin prevents the approach width from being 80 cm.
 - The only area that can be visited is the entrance hall of the Town Hall, a unique room with a homogeneous stone floor

ACCESS FOR PEOPLE WITH VISUAL IMPAIRMENT

PLAÇA DE CORT

The trees have high and easily recognisable boundaries. The ground is not homogeneous and we find paving stones on the road and stones on the sides with danger of slipping in case of rain. The street furniture does not impede the movement of visually impaired people, although the arrangement of furniture in bars or temporary facilities may not be correctly marked

AJUNTAMENT (TOWN HALL)

The floor is homogeneous inside and outside, where there is a toilet adapted for disabled guests; there are unmarked level changes (outside the track). There is a map of the building in relief and Braille, which leads past the security checkpoint. Part of the vertical signage is tactile.

ACCESS FOR PEOPLE WITH HEARING IMPAIRMENT

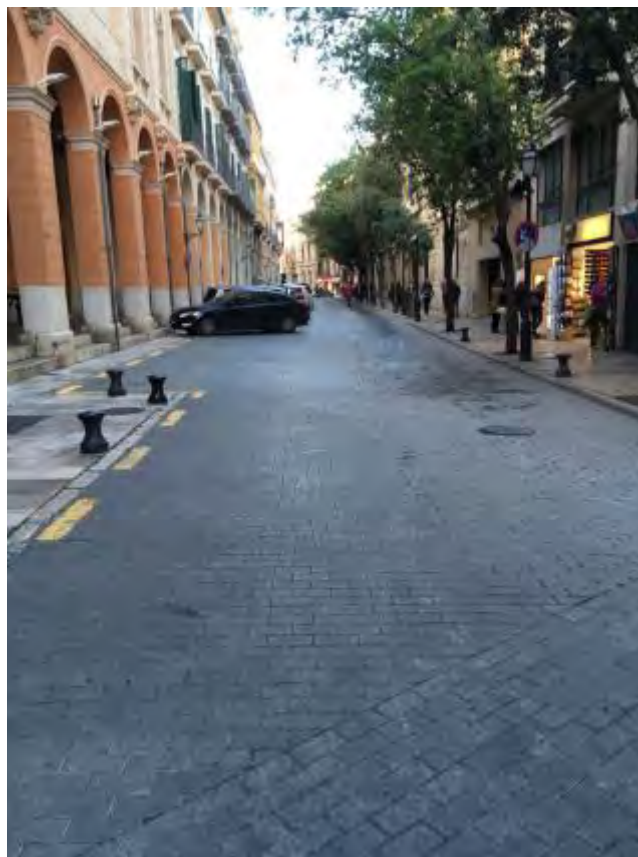
PLAÇA DE CORT

There are signs indicating the direction of the various points of tourist interest. The signs are small, not very visible at the door and not present on the route.

AJUNTAMENT (TOWN HALL)

The staff of the customer service department do not know any sign language. They do not have information IN sign language. There is graphic information about the photo exhibition.

Carrer Palau Reial



PHYSICAL ACCESSIBILITY

A pedestrian section of considerable width between the Cathedral and the Almudaina, with smooth pavement that does not hinder walking. Bollards and lampposts. Flat tree troughs that are not gridded. No significant gradient. Vehicle section with pavements 1-2 m wide, stone paving that does not hinder walking, and the presence of bollards and streetlamps. Some tree holes without grid. No significant gradient. Pavements at the same level as the road, so that there are no uneven surfaces or guidance systems for the blind.

ACCESS FOR PEOPLE WITH VISUAL IMPAIRMENT

Mostly homogeneous floor without unevenness between pavement and road, so that there is no guidance system for the blind. The large influx of people in the high season and the presence of bollards and street lamps along the route could make it difficult for visually impaired people to move around on these roads.

ACCESS FOR PEOPLE WITH HEARING IMPAIRMENT

Lack of signs indicating the direction to nearby tourist points of interest and/or buildings of public interest.

PALAU MARCH



PRACTICAL TIPS

Calle Palau Reial, 18. 07001 Palma

Phone: 971 711 122

E-mail: secretaria@fundacionbmarch.es

Web: www.fundacionbmarch.es

Opening hours

1 April - 31 October

Monday to Friday, from 10:00 to 18:30

Saturdays, from 10:00 to 14:00

Sundays and public holidays: closed

1 November - 31 May

Monday to Friday, from 10:00 to 17:00

Saturdays, from 10:00 to 14:00

Sundays and public holidays: closed

GENERAL INFORMATION

The Palau March houses the art and book collection of the Bartolomé March Foundation. The courtyards of the Palau house collections of contemporary sculptures by artists such as Rodin, Moore and Chillida. One of the museum's rooms houses the 18th century Neapolitan nativity scene, which contains thousands of pieces.



PHYSICAL ACCESSIBILITY
Access
<p>Access from the road through a moderately sloping paved road. Large 3.70 m wide portal with a 1.5 cm lower overhang (doorway). Counter height 1.10 m (There is no wheelchair accessible space at the counter). Ramp in front of the counter with the dimensions: height 18 cm, length 92 cm and width 377 cm. SIA signage at the entrance counter.</p> <p>Access to the patio (paved, which does not hinder walking) through a door 87 cm wide.</p> <ul style="list-style-type: none"> - Large unevenness in the courtyard, not marked - Central grid in the courtyard with gaps of 3 to 4 cm - stairs and stone benches of height 41 around them <p>2 lifting platforms on one side, 1.42 m long and 80 cm wide, for access to the interior exhibition rooms.</p> <p>Internal walkway: > 1.50 m, internal doors > 1.30 m. Pavement inside: polished stone tiles.</p>
<p>Interior wooden ramp with arch (without railing): width: 1.00 m inclination: 7,5 %- length: 4 m It has neither railings nor an inner frame. There is no lift to visit the first floor.</p>
Toilet
<p>Toilet reserved for wheelchair users, marked with SIA signs The 80 cm wide door opens to the outside. Toilet measures: 223 cm x 148 cm Radius Ø 1,50 m Lateral access of 72 cm. Bowl height of 88 cm and toilet height of 46 cm. Lower access area 80 cm high and 39 cm deep. Note: Access to the toilet is through a 90 cm long door and a 1.25 m long corridor with uneven sides, marked by a contrasting colour stripe.</p>
ACCESS FOR PEOPLE WITH VISUAL IMPAIRMENT
<p>It is advisable to come with a companion and guide dogs are allowed. No audio or Braille texts.</p>
ACCESS FOR PEOPLE WITH HEARING IMPAIRMENT
<p>The staff of the customer service department do not know any sign language. They do not have information adapted to sign language, although we have found descriptive posters in several languages.</p>

PALAU DE L'ALMUDAINA



PRACTICAL TIPS

Calle Palau Reial, s/n 07001 Palma de Mallorca

Phone: 971 21 41 34

E-mail:
palaciorealalmudaina@
patrimoni nacional.es

Web: www.patrimoni nacional.es

Opening hours in winter (October - March):

From 10:00h to 18:00h (ticket office open and access to the palace until 17:00h)

Summer (April - September): From 10:00 am to 8:00 pm (ticket sales open and access to the palace until 7:00 pm)

Closed on Monday

GENERAL INFORMATION

The Almudaina Royal Palace, built at the beginning of the 14th century for King Jaume II, was the seat of the Court of the Kings of Mallorca during the reigns of Jaume II, Sancho I and Jaume III, and during the reign of Aragon. Today it is one of the residences of the Spanish Royal Family. Of note are the rooms of the Palau del Rei, de la Reina, the Royal Chapel of Santa Ana and the Gran Saló Tinell Hall.

PHYSICAL ACCESSIBILITY

ACCESS FROM THE STREET



Calle Palau Reial (from Plaza Cort to Calle Victoria): a street with limited use and a slight incline. 1.90 m wide pavement with homogeneous stone paving. Pavements with lowered fords and partial guidance for the blind. There are no tree holes or bollards in this section of the street.

Calle Palau Reial (from Calle Victoria to the Almudaina Palace): a slightly sloping street with limited use for vehicles. Pavement at the level of the carriageway, with variable widths between 2.60 and 1.60 m and homogeneous stone paving. 35 cm high bollards that delimit the pedestrian area of the vehicle. Troughs with grids. Drainage grids along the road, with holes, sometimes larger than 3 cm.

ACCESS TO THE BUILDING

Main access via stairs. Wheelchair users can enter the military zone through the entrance, which is located a few metres from the main entrance (please inform the ticket office.) Two manual wheelchairs are available for visitors, and there is an accompanying person available for the visit.

GROUND FLOOR

Accessible entrance 1.45 m wide, sloping surface approx. 15 m long and 3 m wide with a 6% slope. The counter is 1.15 m high and does not offer a space suitable for wheelchair users.

The pavement of the courtyard consists of irregular stone, although it is generally smooth and does not make walking around difficult. The steps and slopes of the courtyard are not marked. Minimum doorway width 87 cm. There are ramps 70 cm wide and gradients of 8-10% throughout the building. Wheelchair users can visit the entire palace with the exception of the Arab baths. Access to the terrace is via ramps from the guard room.

1ST FLOOR

For those who need it, a private lift is available, always with an accompanying person to help. The floor is of homogeneous stone and there are wide doors and passages between the rooms. There is a single door opening of 75 cm with a step on which ramps are mounted.

TOILET ADAPTED FOR VISITORS WITH DISABILITIES

No adapted toilet, although there is a corresponding project.

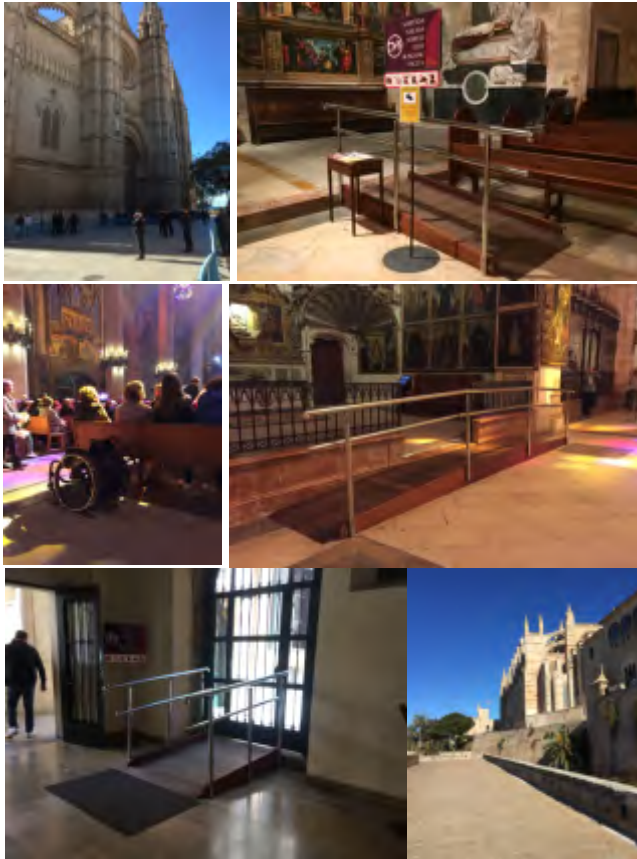
ACCESS FOR PEOPLE WITH VISUAL IMPAIRMENT

Guide dogs are allowed. They have audio guides with audio description via tablet. In some rooms we find that the structure of the palace itself creates cantilevered elements. The steps or unevenness are not marked with guide systems for the blind.

ACCESS FOR PEOPLE WITH HEARING IMPAIRMENT

Audio guide with sign language and subtitles by tablet. The emergency exits are signposted.

LA SEU (CATHEDRAL)



PRACTICAL TIPS

Pl. Almoina s/n 07001 Palma

Phone: 902 022 445/ 902 022 446

E-mail: info@catedraldemallorca.org

Web: www.catedraldemallorca.org

Visiting hours:

2 April - 31 May / October:

Monday to Friday from 10:00 to 17:15

3 June - 30 September:

Monday to Friday from 10:00 to 18:15

4 November - 31 March:

Monday to Friday from 10:00 to 15:15

All year round:

Saturdays from 10:00 to 14:15

GENERAL INFORMATION

The Cathedral of Mallorca is the most important Catholic and religious temple in the city. It was built between 1229 and 1346 on top of the old Arab mosque of Medina Mayurca, of which a tower has been preserved. It is the only Gothic-style cathedral on the seafront and has the largest original rosette in the Gothic world in Europe.

Inside you can admire the works of the architect Antonio Gaudí, which were created during the renovation of the temple, which took about 10 years, and those of the artist Miquel Barceló.

PHYSICAL ACCESSIBILITY

Access: 15cm step. (Access via the Museu de la Seu)

75 cm double leaf access door

Counter height: 1.20 m. There is no space at the counter suitable for wheelchair users.

Specific access for wheelchair users 90 cm wide.



Ajuntament  de Palma

Interior ramp without railing 1.07 m wide, 2.17 m long and 8% slope.
The Cathedral has a 73 cm wide and 1.22 m long lift.

Accessible inner route marked, has ramps 90 cm wide and 10% slope.
They have double railings at 1.15 m and 87 cm with a lower base of 10 cm.
The inner route is ≥ 2 m wide with steps and doors ≥ 87 cm
There is a lift with a platform of 80 x 80 cm.

Toilet reserved for wheelchair users with SIA sign (cloister).

The 85 cm wide door opens to the outside.

Radius \varnothing 1.50 m

Lateral approach space of >1 m.

Alarm button available.

Washroom height 84 cm.

Lower approach area 67 cm high and 35 cm deep.

Note: Access to the toilet is via the 2.45 m wide external cloister.

Note: If a person in a wheelchair arrives, they must enter through the Mirador portal, which is the door to Parque del Mar, whose entrance has a step into the interior secured by a wooden ramp.

ACCESS FOR PEOPLE WITH VISUAL IMPAIRMENT

Homogeneous floor without gaps or unevenness. The position of the central furniture is correct and easy to recognise, even if there are some separate elements on the sides. There are no dangerous overhangs for the movement of visually impaired people. Audio guide in 7 languages. Good lighting.

ACCESS FOR PEOPLE WITH HEARING IMPAIRMENT

Magnetic loop in the Chapel of the Blessed Sacrament for religious functions that are not held in sign language
Information posters in various languages.

Passeig Dalt Murada



PHYSICAL ACCESSIBILITY

Pedestrian street parallel to the wall made of stone paving that does not hinder walking. Variable width, with no significant gradient. Tree holes without bars, but without depth. Adjoining stairs for climbing Carrer del Mirador.

ACCESS FOR PEOPLE WITH VISUAL IMPAIRMENT

Mostly homogeneous floor without unevenness. Various obstacles such as trees or benches that could make it difficult for visually impaired people to move on this road.

ACCESS FOR PEOPLE WITH HEARING IMPAIRMENT

No signs indicating the direction to nearby tourist points of interest and/or buildings of public interest.

PALAU EPISCOPAL I MUSEU D'ART SACRE DE MALLORCA



PRACTICAL TIPS

Palau Episcopal: Calle Mirador, 5, 07001 - Tel.: 971 71 31 33

Museu d'Art Sacre de Mallorca: Calle Mirador, 5, 07001 - Tel. 971723860

Web:
www.museuartsacredemallorca.org

OPENING HOURS

1 April - 31 May / October: Monday to Friday from 10:00 to 17:15

1 June - 30 September: Monday to Friday from 10:00 to 18:15.

2 November - 31 March: Monday to Friday from 10:00 to 15:15.

All year round:
Saturdays from 10:00 to 14:15
Closed on Sundays and public holidays

Free entry for persons with reduced mobility and their accompanying person.

GENERAL INFORMATION

The Episcopal Palace is located behind the apse of Palma Cathedral. It is the headquarters of the bishops, the first bishop on Mallorca being Ramon de Torrella (1238 - 1266).

Its style, mainly baroque, has been changed many times since the 13th century. The oldest part of the palace houses the Museu d'Art Sacre de Mallorca, formerly known as the Diocesan Museum. In Gothic style, it is one of the oldest buildings on the island. It is the result of an initiative by Bishop Pere Joan Campins and was consecrated in 1916. In 2019 it underwent a major reform with the aim of transforming the Diocesan Museum into a more educational, accessible and participatory museum with a new museum discourse and new resources and changing its name to Museum of Sacred Art of Mallorca (MASM).

PHYSICAL ACCESSIBILITY

ACCESS FROM THE STREET

Calle del Mirador: pedestrian area with restricted access for vehicles. Homogeneous stone paving. No significant gradient. Calle del Palau: Pedestrian street with limited access for vehicles. Homogeneous stone paving. Low gradient and in some places less than 2 metres wide.



ACCESS TO THE BUILDING
<p>Bishop's Palace: only the inner courtyard can be visited. At the entrance there is a small step of 3 cm. The pavement is made of irregular stone, which can make walking difficult in some areas.</p> <p>Diocesan Museum: access from the pedestrian square via a ramp, followed by another descending ramp 1 m wide, 1.20 m long and 14% incline with double railings 70 cm high and 108 cm on both sides. Double sliding glass door with contrasting signs. Counter height 114 cm with a section adapted for wheelchair users, counter width 125 cm and height 76 cm. Entrance to the rooms through automatic sliding door with a free passage of 86 cm and stone arch with a free passage of 90 cm.</p>
GROUND FLOOR
<p>The floor consists of smooth stone and the passages between the rooms are more than 1.30 m wide. There are two inclined passages between the rooms across the width of the room, one 3.60 m long and with an inclination of 8% and the other, 4.30 m long and with an inclination of 10%, with a railing 4 in the intermediate area with double railing, one 67 cm from the floor and the other 100 cm from the floor. One of the rooms has the whole floor with a slope of 5%.</p>
1st FLOOR
<p>Access to floor 1 via a lift with a width of 1.10 m and a length of 1.40 m, with a bar at 90 cm height. Door opening of 89 cm.</p> <p>The floor of the rooms is made of smooth stone and the passages between the rooms are more than 1 m wide. This floor is all on the same level.</p>
TOILET ADAPTED FOR VISITORS WITH DISABILITIES
<p>The toilet reserved for wheelchair users is located on the ground floor. It has SIA signs. Access is through an 89 cm long passageway, followed by a sliding door with a free passageway of 80 cm. The toilet is 1.90 m wide and 2.70 m long. Radius Ø 1.50 m. Toilet height 48 cm with double bar and sink height 88 cm. It has a width of 80 cm on both sides of the toilet.</p> <p>Lighting with motion sensor.</p>
ACCESS FOR PEOPLE WITH VISUAL IMPAIRMENT
<p>Guide dogs are allowed. Information board in relief and in Braille on both floors of the building. Model of the building and replica of a work, both in 3D at the beginning of the collection. Large screens with videos and other graphic material with audio description. High contrast signage in the collection areas and also in Braille in the toilets. Lift with visual and acoustic signals and lighting. Guidance system for the blind at the lift entrance and in different parts of the floor.</p>
ACCESS FOR PEOPLE WITH HEARING IMPAIRMENT
<p>There are no audio guides or magnetic loops, and the staff do not know sign language. Several rooms have large screens with videos and other visual material.</p>

Carrers Mirador / Palau

PHYSICAL ACCESSIBILITY

Calle Mirador: Pedestrian street with restricted access for vehicles.
Homogeneous stone pavement. No significant gradient.

Calle del Palau: Pedestrian street with limited access for vehicles.
Homogeneous stone paving. Low gradient and in some places less than 2 metres wide.

ACCESS FOR PEOPLE WITH VISUAL IMPAIRMENT

Pedestrian crossings with lowered curbs and partly guidance system for the blind.
Presence of bollards in a section of road.

ACCESS FOR PEOPLE WITH HEARING IMPAIRMENT

Signs indicating the direction of nearby points of tourist interest and/or buildings of public interest.

Carrer Sant Pere Nolasc



PHYSICAL ACCESSIBILITY

Pedestrian and vehicle road with restrictions.

Road width: 4 m.

Slight inclination.

Homogeneous cobblestone pavement.

Drainage holes with 3 cm holes.

No bollards or tree barrels.

ACCESS FOR PEOPLE WITH VISUAL IMPAIRMENT

Mainly homogeneous paving that does not hinder walking, without unevenness or fords.

ACCESS FOR PEOPLE WITH HEARING IMPAIRMENT

Signs indicating the direction of nearby tourist attractions and/or buildings of public interest.

Carrers Almudaina / Morei





Ajuntament  de Palma

PHYSICAL ACCESSIBILITY

Calle Almudaina:

Pedestrian street of variable width between 2 and 3 metres, with smooth stone paving that does not obstruct walking. Slightly sloping, without bollards, trees or other obstacles.

Calle Morei:

Vehicle and pedestrian street of about 3 m width, without pavements and with smooth stone paving that does not hinder walking. No significant inclination, no bollards or trees, with posts fixed to the wall.

ACCESS FOR PEOPLE WITH VISUAL IMPAIRMENT

Calle Almudaina:

Mostly homogeneous floor without unevenness and therefore without a guidance system for the blind. No obstacles that could impede the passage of a visually impaired person.

Calle Morei:

Mostly homogeneous floor without unevenness and therefore no guidance system for the blind.

ACCESS FOR PEOPLE WITH HEARING IMPAIRMENT

Signs indicating the direction of nearby points of tourist interest and/or buildings of public interest.

CAN BORDILS



PRACTICAL TIPS

Carrer de l'Almudaina, 9 07001 Palma

Phone: 971 22 59 63

e-mail: arxiu@palma.cat

Only the inner courtyard can be visited.

GENERAL INFORMATION

Can Bordils is located at one of the most important crossroads in the old town. The origins of the house date back at least to the Islamic period. At the time of the Christian conquest in 1229 it belonged to a Jew called Maimó Beniferaix. Since the 15th century it has been the residence of the Sureda-Zanglada family.

Later it passed to the Bordils (17th-19th century) and from them to the Villalonga Escalada (19th-20th century). The two Renaissance windows on the façade are decorated with the coats of arms of the Sureda family and their successive links with the Moyà and Zanglada families.

The arch of the Almudaina rests on the house. It corresponds to one of the gates of the Roman city (Palma). On the side façade of Can Bordils, remains of the Roman wall have been exposed. This original city survived as a nucleus enclosed within a larger Islamic city, a complex known as the Almudaina, a name taken from the Palace of the Vali of Mayurqa.

PHYSICAL ACCESSIBILITY

ACCESS

Calle Almudaina: a pedestrian and vehicle street with limited use, with a variable width of 2.20 to 3 metres and a slight inclination towards Calle Morei. Homogeneous cobblestone pavement without grilles or bollards. No guidance system for the blind.

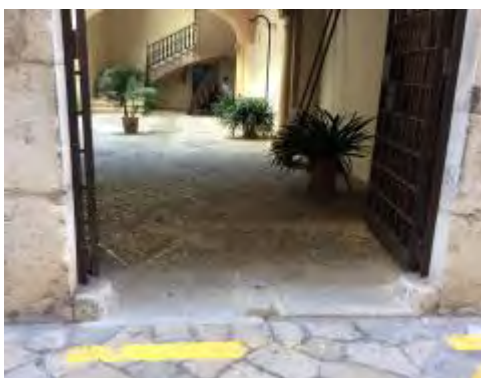
INSIDE

Entrance to the courtyard via a small stone ramp 40 cm long and 84 cm wide with a gradient of 30%. Pretty regular cobbled pavement without any significant inclination.

SENSORY ACCESSIBILITY

At the entrance to the courtyard there is a map of the building and the surrounding streets in Braille and relief. The cobbled courtyard is quite regular, although the cobblestone pavement is not smooth and there are some free-standing columns and several flower pots. At the end of the courtyard there is a staircase leading down to a basement, creating a hole that is neither marked nor delimited.

CAN OMS



PRACTICAL TIPS

Calle de l'Almudaina, 7
Palma 07001

Only the inner courtyard can be visited

GENERAL INFORMATION

The patio where the Can Oms building is located is one of the oldest buildings in Palma. In 1642 it was occupied by the noble family of Dom, symbolised by the coat of arms on the balcony of the staircase. The courtyard, which dates from the early 18th century, was restored in 1982 by Palma City Council, the current owner of the house.

PHYSICAL ACCESSIBILITY

ACCESS

Calle Almudaina: a pedestrian and vehicle street with limited use, with a variable width of 2.20 to 3 metres and a slight inclination towards Calle Morei. Homogeneous cobblestone pavement without grilles or bollards. No guidance system for the blind.

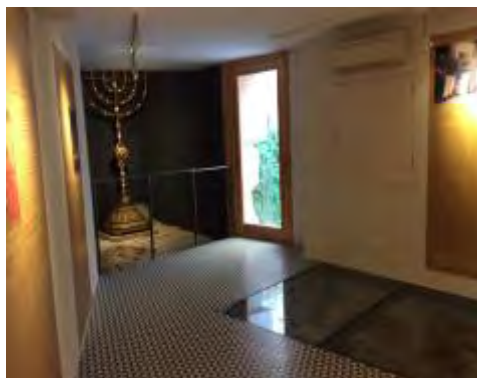
INSIDE

Entrance to the courtyard through a large open gate, via a small stone ramp 47 cm long and 80 cm wide with a 22% inclination. Pretty regular cobbled pavement without any significant inclination.

SENSORY ACCESSIBILITY

The pavement of the courtyard is quite regular, although the flooring is not smooth and there are columns and several flower pots on the facades.

CASA MAIMÓ BEN FARAIG



PRACTICAL TIPS

Calle Almudaina 9 07001

Phone: 971 225 599 (Ext. 1226)

Email: calljueu@gmail.com

Visiting hours

Monday to Saturday, from 10:00 to 15:00

GENERAL INFORMATION

The Interpretation Centre of the Jewish Quarter of Palma, located in the historic quarter of Palma, has the objective of making the medieval Jewish history and culture of the 14th century known in the Balearic Islands.

Inside the building you can see part of the old Roman walls and the menorah with seven arms, symbol of Jewish culture.



PHYSICAL ACCESSIBILITY
ACCESS FROM THE STREET
Calle de la Almudaina: a 3.30 m wide pedestrian and vehicular street with homogeneous stone paving and a slight incline towards Calle Palau Reial.
ACCESS TO THE BUILDING
The building is entered via a 1.40 m wide and 80 cm long non-slip stone ramp with an inclination of 8%, followed by an 86 cm wide gate that opens outwards.
INSIDE
The counter has a height of 110 cm and is not suitable for wheelchair users. The centre consists of two small exhibition rooms with homogeneous flooring. There is a ramp connecting the two rooms. It is 1.10 m wide, 1.50 m long and has a 10% inclination, with double railings of 67 cm and 98 cm high on both sides and a 10 cm high baseboard.
TOILET ADAPTED FOR VISITORS WITH DISABILITIES
There is a toilet adapted for wheelchair users without SIA sign. The door opening could be 90 cm, but due to the position of the furniture in the room it is currently 66 cm. Radius Ø 1.50 m to be registered. Lateral approach space of 1.17 m. Height of the WC 48 cm and of the washbasin 87 cm, with double bar. Lower approach space 73 cm high and 25 cm deep.
ACCESS FOR PEOPLE WITH VISUAL IMPAIRMENT
Guide dogs are allowed. There is no information in Braille. There is no audio guide. There are some protruding, unmarked elements, especially information cupboards.
ACCESS FOR PEOPLE WITH HEARING IMPAIRMENT
The staff do not know sign language, but the exhibition material is mainly written and visual.

Plaça Santa Eulalia



PHYSICAL ACCESSIBILITY

Road for pedestrians and vehicles with limited use.

Road over 2 m wide with homogeneous stone paving and slight slope towards Calle Morei. From Calle de la Cadena to Calle Sant Francesc: the stone paving is very smooth and very slippery. Pavements and carriageway at the same level, with bollards that separate the pedestrian area from the vehicle area.

Calle Santa Eulalia: a limited pedestrian and vehicle street more than 3 metres wide. There are bollards that separate the pedestrian area from the vehicle area, but the presence of containers and numerous parked bicycles and motorbikes means that people and vehicles must move through the same space. Smooth but not slippery stone pavement.

ACCESS FOR PEOPLE WITH VISUAL IMPAIRMENT

In some sections the pavement of the square can become very slippery. Presence of bollards, stairs and cafeteria terraces that can make walking difficult.

ACCESS FOR PEOPLE WITH HEARING IMPAIRMENT

Signs indicating the direction of nearby tourist points and/or buildings of public interest.

IGLESIA DE SANTA EULALIA (SANTA EULALIA CHURCH)



PRACTICAL TIPS

Plaza de Santa Eulalia, 2 07001 Palma de Mallorca

Phone: 971714625

email: psantaetulalia@yahoo.es

Web: bisbatdemallorca.com

Visiting hours:

Free access before the services

Trade fairs:

Monday to Friday 10:30 and 20:00

Saturdays and vigils 12:00 and 20:00

Sundays and holidays 10:30/

12:30/19:00/21:30

GENERAL INFORMATION

The Santa Eulalia church is of great importance in the history of the Kingdom of Mallorca. In 1276, the new King of Mallorca, Jaume II, was elected here by his father Jaume I. (the previous king of the kingdom).

Of the Gothic-style church, the most outstanding features are the huge and striking neo-Gothic-style bell tower with its pointed capital, the terraces and gargoyles, the Santo Cristo de la Conquista and the original main apse. It is noteworthy that the surrounding streets hide the old cemetery of the parish of Santa Eulalia.

PHYSICAL ACCESSIBILITY

ACCESS FROM THE STREET



Plaza de Santa Eulalia: Pedestrian and vehicle street with limited use. Street over 2 m wide with homogeneous stone paving and a slight slope towards Calle Morei.

From Calle Cadena to Calle Sant Francesc: the stone paving is very smooth and very slippery. Pavements and carriageway at the same level, with bollards that demarcate the pedestrian area of the vehicle.

Calle Santa Eulalia: a limited pedestrian and vehicle street more than 3 metres wide. There are bollards that demarcate the pedestrian area from the vehicle area, but the presence of containers and numerous parked bicycles and motorbikes means that people and vehicles must move through the same space. Smooth but not slippery stone pavement.

ACCESS TO THE BUILDING

Access for wheelchair users is through the side entrance in Calle Santa Eulalia. The entrance is via two 1.20 m wide ramps with an 8% incline, followed by two very heavy wooden double doors, so it is advisable to come with an escort.

INSIDE

Only the inside of the church is accessible, as there is no lift to get up to the terraces. The paving is of homogeneous stone and the passages are wide.

TOILET ADAPTED FOR VISITORS WITH DISABILITIES

There are no toilets.

ACCESS FOR PEOPLE WITH VISUAL IMPAIRMENT

The interior of the church does not pose a problem for the visit.

ACCESS FOR PEOPLE WITH HEARING IMPAIRMENT

Worship services are not held in sign language, and there is no information material available, although the environment is limited and very intuitive.

ACCESS TO THE JEWISH QUARTER

Carrer Can Fortuny



PHYSICAL ACCESSIBILITY

Pedestrian and vehicle road with restrictions.

Homogeneous cobblestone and paving stones.

In one section of the road there are 1 m long pavements, separated from the road by bollards and fords that are not completely lowered.

In another section, the road is 3.60 m wide and there is no difference in height between the pavement and the roadway.

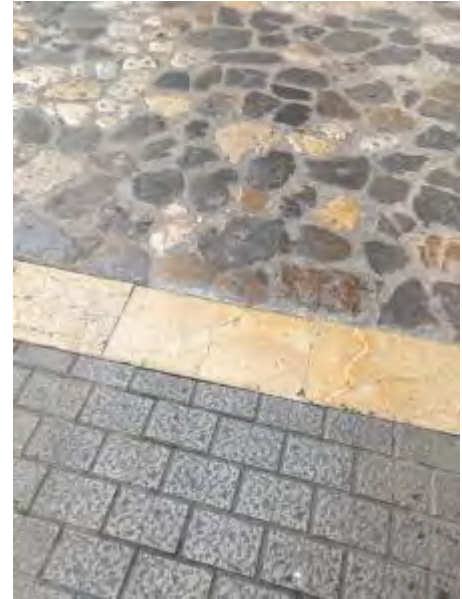
ACCESS FOR PEOPLE WITH VISUAL IMPAIRMENT

Bollards and restaurant terraces in areas with narrow pavements could make walking difficult for visually impaired people. The fords are not completely lowered and there is no guidance system for the blind.

ACCESS FOR PEOPLE WITH HEARING IMPAIRMENT

Signs indicating the direction of nearby tourist points and/or buildings of public interest.

Carrer Call



PHYSICAL ACCESSIBILITY

Vehicle road with restrictions and pavements on both sides of the road.
Variable road width from 1.60 to 5 m. Pavements with a width of sometimes less than 1 m.
Homogeneous stone pavement, but quite worn in some places.
Reduced fords.
Bollard on one of the pavements.
There are no tree barrels.
Drainage holes with 2.5 cm holes.

ACCESS FOR PEOPLE WITH VISUAL IMPAIRMENT

Mostly homogeneous pavement, which does not make walking difficult, although it is slippery in some places.
Lowered fords without guidance systems for the blind. A pavement is equipped with bollards and there are sections where the passage can be difficult due to the reduced width.

ACCESS FOR PEOPLE WITH HEARING IMPAIRMENT

Signs indicating the direction of nearby tourist points and/or buildings of public interest.

Carrer Santa Clara



PHYSICAL ACCESSIBILITY

Pedestrian and car road with restrictions.

First section of road with variable width from 5.30 to 8.50 m and homogeneous pavement of cobblestones that does not hinder walking. Pavement and carriageway at the same level, separated by bollards on both sides.

Presence of drainage holes with holes of 2,5 cm.

Second section of road with a width of 4.40 m and homogeneous stone paving that does not hinder walking. In this section there is no separation by bollards.

Drainage holes, with holes of 3 cm.

There are no tree barrels or street furniture.

Access to the patio of the Santa Clara Convent: paved walkway that makes walking difficult. Doors with a lower step of 12 cm without access ramp.

ACCESS FOR PEOPLE WITH VISUAL IMPAIRMENT

The parked motorbikes and restaurant terraces can make it difficult for visually impaired people to walk.

ACCESS FOR PEOPLE WITH HEARING IMPAIRMENT

Signs indicating the direction of nearby tourist attractions and/or buildings of public interest.

Carrer Sant Alonso



PHYSICAL ACCESSIBILITY

Pedestrian and car road with restrictions.
Homogeneous paving that does not hinder walking, partially paved and cobbled.
Variable road width.
Pavement width between bollards and façade: from 1.25 m to 1.80 m

ACCESS FOR PEOPLE WITH VISUAL IMPAIRMENT

Mostly homogeneous floor without unevenness between the pavement and the road, so that there are no fords or guide systems for the blind.

ACCESS FOR PEOPLE WITH HEARING IMPAIRMENT

No signs indicating the direction of nearby points of tourist interest and/or buildings of public interest

Carrer del Vent , Carrer Montision



PHYSICAL ACCESSIBILITY

Calle del Vent: Pedestrian and car streets with restrictions

Variable road width from 2.50 m to 2.85 m.

Homogeneous paving, which generally does not hinder walking.

Presence of concrete bollards in the square of the Montision church.

There are no tree barrels or drainage holes

There is no street furniture.

Calle Montision: Type of street: pedestrians and vehicles with restrictions.

Street width: 3.99 m

Type of paving: paved, which generally does not hinder walking.

radius at the corners: >Ø 1,50 m

Grille: holes 2-3 cm Bollard: no

ACCESS FOR PEOPLE WITH VISUAL IMPAIRMENT

Calle del Vent: Street with a largely homogeneous pavement that does not make walking difficult. There are no bumps, so there is no guidance system for the blind.

Calle Montision: Homogeneous paving.

ACCESS FOR PEOPLE WITH HEARING IMPAIRMENT

Signs indicating the direction of nearby points of tourist interest and/or buildings of public interest

Carrer de la Criança



PHYSICAL ACCESSIBILITY

Pedestrian street with variable width between 1.85 m and 2.10 m. In the narrowest places it can be difficult for wheelchair users to turn around
Mostly homogeneous cobblestone pavement.
Drainage holes with 3 cm holes.
No tree barrels or street furniture.

ACCESS FOR PEOPLE WITH VISUAL IMPAIRMENT

Street with homogeneous pavement that does not hinder walking.

ACCESS FOR PEOPLE WITH HEARING IMPAIRMENT

No signs indicating the direction of nearby points of tourist interest and/or buildings of public interest.

Carrer Sol

PHYSICAL ACCESSIBILITY

Pedestrian and car road with restrictions.
 Road width: 3.74 m
 Type of paving: Paved area Floor that does not generally hinder walking.
 Radius in the corners: >Ø 1.50 m
 Slope of the road: slight incline towards C/ Sant Francesc.
 Drainage holes with holes of 2 and 3 cm.
 No bollards.

ACCESS FOR PEOPLE WITH VISUAL IMPAIRMENT

Mostly homogeneous floor without unevenness, so that there are no fords or guide systems for the blind.

ACCESS FOR PEOPLE WITH HEARING IMPAIRMENT

No signs indicating the direction of nearby points of tourist interest and/or buildings of public interest.

Carrer Pare Nadal

PHYSICAL ACCESSIBILITY

Street type: pedestrian and vehicle street with restrictions
 Width of the road:
 - 2.89 m and 4.01 m with the Carrer de Sant Francesc
 - 4.22 m with Monti-sion and Carrer del Call
 Type of road surface: paving that does not generally hinder walking.
 Radius in the corners: >Ø 1.50 m
 Slope of the road: slight incline towards C/ Sant Francesc.
 Bollard: no

ACCESS FOR PEOPLE WITH VISUAL IMPAIRMENT

Homogeneous paving stones. Change of paving on arrival at Carrer Sol

ACCESS FOR PEOPLE WITH HEARING IMPAIRMENT

No need for accessibility

ESGLÈSIA DE SANT FRANCESC (CHURCH)



PRACTICAL TIPS

Plaza de Sant Francesc, 7 07001 Palma

Phone: 971 712 695

Opening hours:

Monday to Saturday:

From 1/11 to 1/03: from 10 a.m. to 1:30 p.m. and from 2:15 p.m. to 5 p.m.

From 03/01 to 10/31: from 10 a.m. to 1:30 p.m. and from 2:15 p.m. to 6 p.m.

GENERAL INFORMATION

The Gothic church, next to San Francisco, began to be built around 1286 and was the residence of the Franciscans.

Reformed several times, the figures of Santo Domingo and San Francisco stand out from the façade. Inside you can admire the huge Gothic nave with side chapels, one of which houses the tomb of Ramon Llull. Next to the church is the cloister.

PHYSICAL ACCESSIBILITY

ACCESS FROM THE STREET

Plaza Sant Francesc: Car park with pavements around it. Walkway widths from 1 to 2.70 m, with homogeneous stone paving and without lowered curbs. Calle Sant Francesc: limited pedestrian and vehicle use and width over 4 m. Homogeneous stone paving that becomes very slippery when you reach Plaza Santa Eulalia. Calle Ramon Llull: this is the street where wheelchair access is located. It is a passable street with a pavement width of 1.45 metres.

ACCESS TO THE BUILDING



Ajuntament  de Palma

Access for wheelchair users is through the side entrance of the school, in Calle Ramon Llull. There is a 9 cm step to enter, and then it is accessible.

INSIDE

Access to the cloister is through a door with a 72 cm long passageway. Everything is at the same height, except for the central part of the cloister, which is accessible via a 15 cm high step. Access to the sacristy must be through the church, as the entrance through the cloister has a 15 cm high step.

TOILET ADAPTED FOR VISITORS WITH DISABILITIES

There is no toilet adapted for wheelchair users.

ACCESS FOR PEOPLE WITH VISUAL IMPAIRMENT

The cloister and the interior of the church do not pose a problem for walking.

ACCESS FOR PEOPLE WITH HEARING IMPAIRMENT

Worship services will be held in sign language. Written information in the form of maps is available in several languages.